

Welcome to

DrawingSearcher™
The Corporate-wide Search Engine

Click "[General Information](#)" to view general information





All rights reserved.
Copyright(c)
1989-2019 ©
Docupoint

DrawingSearcher 2019

General Information

DrawingSearcher is a software application that works just like a standard web search engine except that it is used to access your technical document files across a LAN, intranet or the Web. With DrawingSearcher you can search through AutoCAD drawings by the words and numbers stored **inside** the drawing; simply enter the search string and press the Search button. To view a drawing listed in the search results, just select the preview image or link and the view will open right inside your web browser and zoom to the search text within the drawing file. DrawingSearcher automatically generates a preview image and views files in Autodesk's DWF file format as well as Adobe's PDF format. Autodesk DWF Viewer and Autodesk Design Review are the recommended viewers for use with DrawingSearcher and are FREE downloads from Autodesk's website. DrawingSearcher provides the additional capability of searching on Microsoft Office type documents including .DOC, .XLS and .PPT, as well as Adobe PDF files and scanned documents in CALS and TIFF format. In order to recognize raster formats and automatically convert them into a searchable format you need to purchase an additional OCR plug-in.

Complete up-to-date DrawingSearcher information can be found at:
www.Docupoint.com

DrawingSearcher Core Functions

DrawingSearcher has two primary functional software routines as follows:

1. **Indexer** - the indexer "crawls" and processes files, extracts their alpha-numeric text to the full text search engine and, for drawing files, creates the preview images and DWF viewing files. The indexing process is very compute-intensive and initial indexing can take considerable time (hours and days) to complete for large archives. DrawingSearcher is designed so that after the initial index creation is complete, the index can be incrementally rebuilt very fast by regenerating the preview images and DWF files only for files where content changes have been made. The indexing jobs can either be submitted on an ad-hoc basis using 'Index Now' functionality or through scheduled batch jobs - often run at night or on the weekends or every hour-on-the-hour - based in the I.T. Department's preferences.

2. **Web Server** - the web server provides the web site that end users visit to Search and View the results of the indexing process. Typically the web server is running all the time to provide end users immediate access to the drawing files being sought after.

The indexer and web server functionality is configured through the DrawingSearcher Console Application. The Console is the interface that the Administrator uses to configure preferences and manage DrawingSearcher's setup and properties and settings. Access to the Console is typically limited to an I.T. Department Administrator, while end users access DrawingSearcher through the web server.

DrawingSearcher 2019

System requirements

In order to run the DrawingSearcher 2019 application, the server system, commonly located inside the I.T. Department-controlled Computer/Data Center, should meet the following minimum system requirements:

- A 100% PC compatible computer with a Minimum of 512MB of RAM, 100 GB HDD and 2.4+ Ghz Processor
- Microsoft's Operating Systems Supported: MS Windows XP, Windows 2003 Server, Windows Vista or Windows 7
- At least 20 GB of free disk space for the indexing, and creation of preview images and DWF viewing files

The client computers that access the DrawingSearcher web server should have the following minimum system requirements:

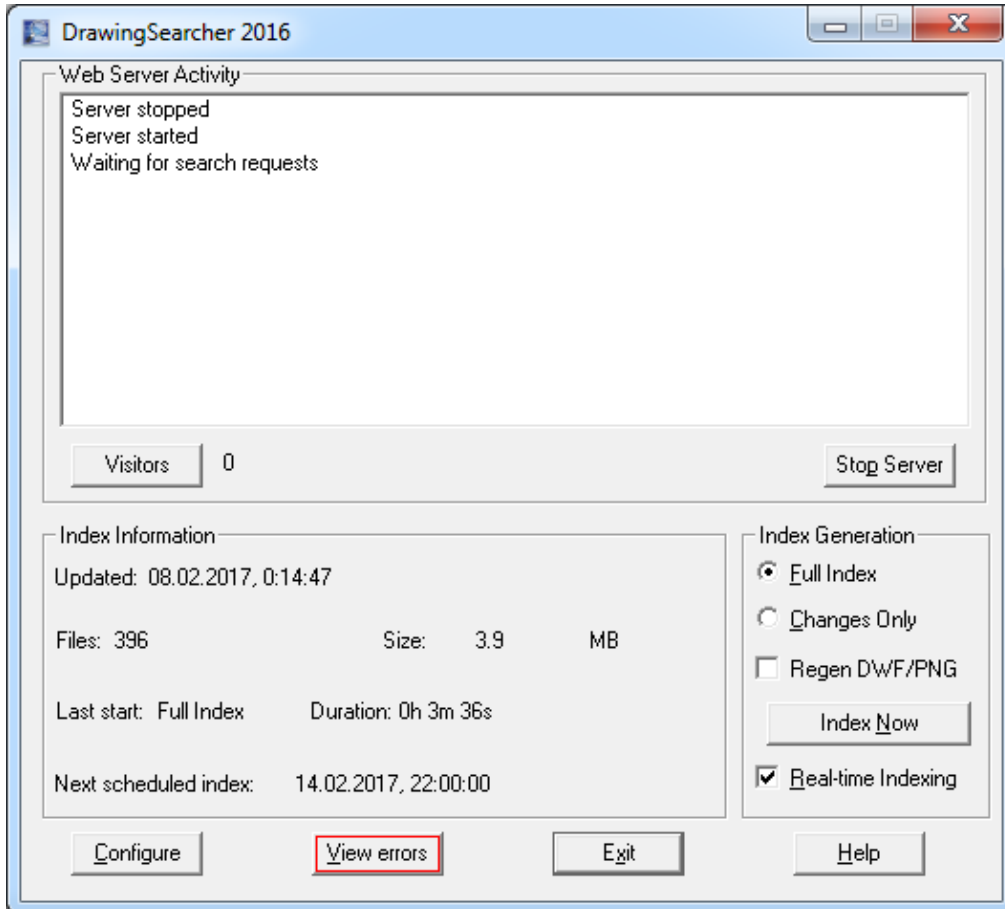
- A 100% PC compatible computer with a 1+ GHz Processor
- Microsoft's Operating Systems Supported: MS Windows 2000, XP or Vista OS
- Internet Explorer 6.0 or 7.0 web browser or newer
- Autodesk DWF Viewer or Autodesk Design Review for DWF file viewing - FREE downloads from Autodesk's website

The above are only general recommendations and user satisfaction with any particular configuration will be highly dependent on the number of drawing files to be processed and searched. The search speed is largely independent on the processor speed. If a large number of drawings are to be indexed (25,000+) then a high performance workstation class computer should be dedicated to the task.

DrawingSearcher 2019

Console : Main Dialog

The DrawingSearcher console main dialog allows Administrators to perform the primary administrative functions such as start/stop web server, view the server log, check indexing status, execute index processes and so on.



Here is the list of controls on the main dialog window:

Web Server Activity Window

The web server activity window is used to display whether the web server is active and to provide details on the search activity being received. The user requests are also logged in the web server activity window.

Stop/Start Server Button

This button stops and restarts the web server. If the web server is stopped it will be unable to respond to search requests and the initial page display. The button toggles in functionality between start and stop, depending on the current state of the web server

Configure Button

This button takes the administrator to a series of tabbed interfaces to allow the input of configuration parameters. See the [DS console settings](#) for detailed description of the DrawingSearcher 2019 configuration sequence.

Index Information Panel

If the indexer is currently idle (not processing files) the panel displays information pertaining to the current index. If the indexer is running this panel dynamically displays the file being processed and the provides administrator feedback regarding the percent complete via the progress bar.

Index Generation

Choose index generation mode by selecting one of the following options : **Full Index** or **Changes Only**. When running a **Full Index** all files in the active ('on') directories are reprocessed and the full text search index is completely rebuilt from scratch. If the 'Regen PDF/DWF/PNG' option is disabled then the DWF/PNG files will be re-created only for DWG files that have had content changes or if the DWF/PNG files are missing. Enabling the 'Regen DWF/PNG' option will force all DWF and PNG files to be recreated regardless of whether they are current or out of date. Because 'Regen DWF/PNG' is a slow, compute intensive process, it should only generally only be run if there is a change to the DWF settings such as background color, etc. When running a **Changes Only** index only files with changes to the content are reprocessed. A new entry written to the full text search database and the DWF/PNG files are regenerated to reflect the most current information. During a changes only index both the file is checked for date/time stamp changes as well as files that the parent file XREF's. If either the parent file's date/time stamp is changed or an XREF's date/time stamp is changed, the the file is reprocessed. Selecting the **Index Now**" button starts the process immediately. Alternatively, the index process can be scheduled on the Schedule tab.

View Errors Button

If errors were encountered in the indexing process selecting this button will open a window to display the errors. If no errors were encountered the button is disabled.

Exit Button

Closes the DrawingSearcher console. The administrator will be prompted as to whether they wish to leave the web server and indexing processes running.

Help Button

Press the "**Help button**" to view the DrawingSearcher 2019 help file.

See also:

- [Folders To Index tab](#)
- [Title Block Extraction tab](#)
- [Thesaurus tab](#)

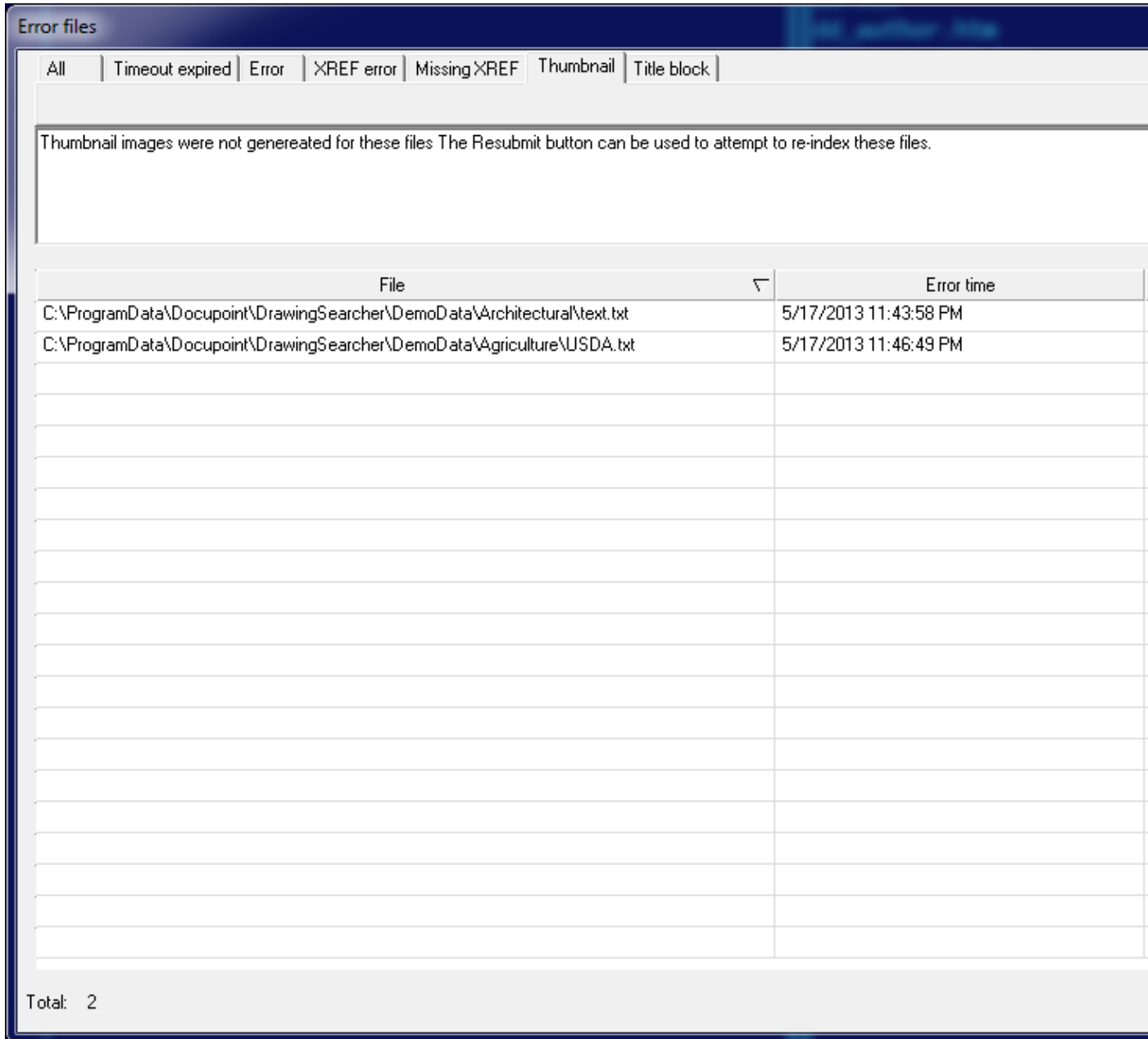
- [XREF Path Mapping tab](#)
- [Browse Configuration tab](#)
- [Indexer tab](#)
- [Schedule tab](#)
- [Authorization/About tab](#)
- [General tab](#)
- [Web Server tab](#)
- [PDF/DWF/PNG generation tab](#)
- [Mail notification tab](#)
- [Console application](#)

settings

DrawingSearcher 2019

Console : Error files Dialog

The Error Files Dialog is used to view the list of files that caused errors during the last(most recent) indexing process. If errors were encountered in the indexing process, select the "**View Errors**" button from the main dialog. Note that if no errors were encountered during indexing, the button is disabled. Otherwise you should see the following dialog when pressing the "**View Errors**" button:



The list of controls into **Error files** dialog:

Resubmit Button:

The "Resubmit" button is used to re-index the list of files that generated errors. If you press the Resubmit button the DS console asks if you really want to re-index the chosen files. Press "OK" if you want execute the index process immediately. After that the error list dialog is closed and the index job is started. For more information about indexing see also the [Docupoint DrawingSearcher console main dialog](#) description.

Close Button:

Press the "**Close**" button to close the error list dialog and return to the [main dialog window](#) of the DrawingSearcher console.

Print Button:

By pressing the "Print" button the error list report is automatically generated by the DS console and sent to the printer. The print button executes the "Print" dialog that allows you to choose the printer and change printer properties if needed , after that the report is generated and printed on the printer you've selected.

Error type header group:

All the files that caused errors can be viewing into one of the four modes, depending on the error types:

MODE:	Description:
"All Errors" mode	All types of errors are displayed in this mode. You can view the full list of files that caused errors during indexing.
"Timeout expired" mode	Files caused termination of the processing by timeout. These files may be correct but the time to process them is greater than timeout value.
"Error" mode	The listed files are either corrupt or invalid DWG files and have NOT been indexed by DrawingSearcher. These files have been placed in "quarantine" and will not be re-indexed until the files are opened and saved with a new date/time stamp. These errors should be corrected first as the files may also be XRef'd by other AutoCAD drawings causing additional errors. It is suggested that the files be opened in AutoCAD, audited, and saved as the same name. If the file does not load the recover function should be used to attempt to open the drawing. After the files have been successfully audited and saved the Resubmit function should be used to index the files.

<p>"XREF error" mode</p>	<p>The drawings listed have XRef or image files that either could not be found or are corrupt. The files should be opened in AutoCAD and the XRef's or Image's examined for either of these conditions. These files have NOT been indexed in DrawingSearcher or had DWF or PNG files (optional) created as the data would be incomplete. Subsequent indexing of any kind will attempt to re-index these files. However, the indexing will be unsuccessful until the condition causing the error has been corrected. Problems resolving the XRef or Image paths can be addressed using the XRef mapping functionality. The Resubmit button can be used to attempt to re-index these files.</p>
<p>"Thumbnail" mode</p>	<p>Thumbnail png, dwf or pdf file were not created. Error happened during generation of thumbnail image.</p>
<p>"Title Blocks Errors" mode</p>	<p>Attributed title blocks were not found for these drawings. Check to See that the title block name and attributes are mapped on the "Title Block Extraction" tab and resubmit the files for indexing using the Resubmit button. These files have been indexed and (optionally) have had DWF files created. However the title block data was not successfully extracted for display in the results. Re-indexing using the "changes only" mode will not re-index these files as the date/time stamp will not have changed. These files can be re-indexed ONLY by using the Resubmit button on this screen (forcing them to be re-indexed regardless of date/time stamp compare) or through a full re-index.</p>

"Files with Errors" list grid:

The grid lists the files that caused errors during index process according to the current error type mode. You can switch the displayed error type by selecting the one of the tabs in the header. The grid contains three columns : **"File"**, **"Error time"** and the **"Error type"**. So you can sort the files by their filename, error time or error type. The **"File"** column contains the full path of the file that caused the error. The **"Error time"** shows the time when the error occurred and the **"Error type"** shows the code of the error.

See also:

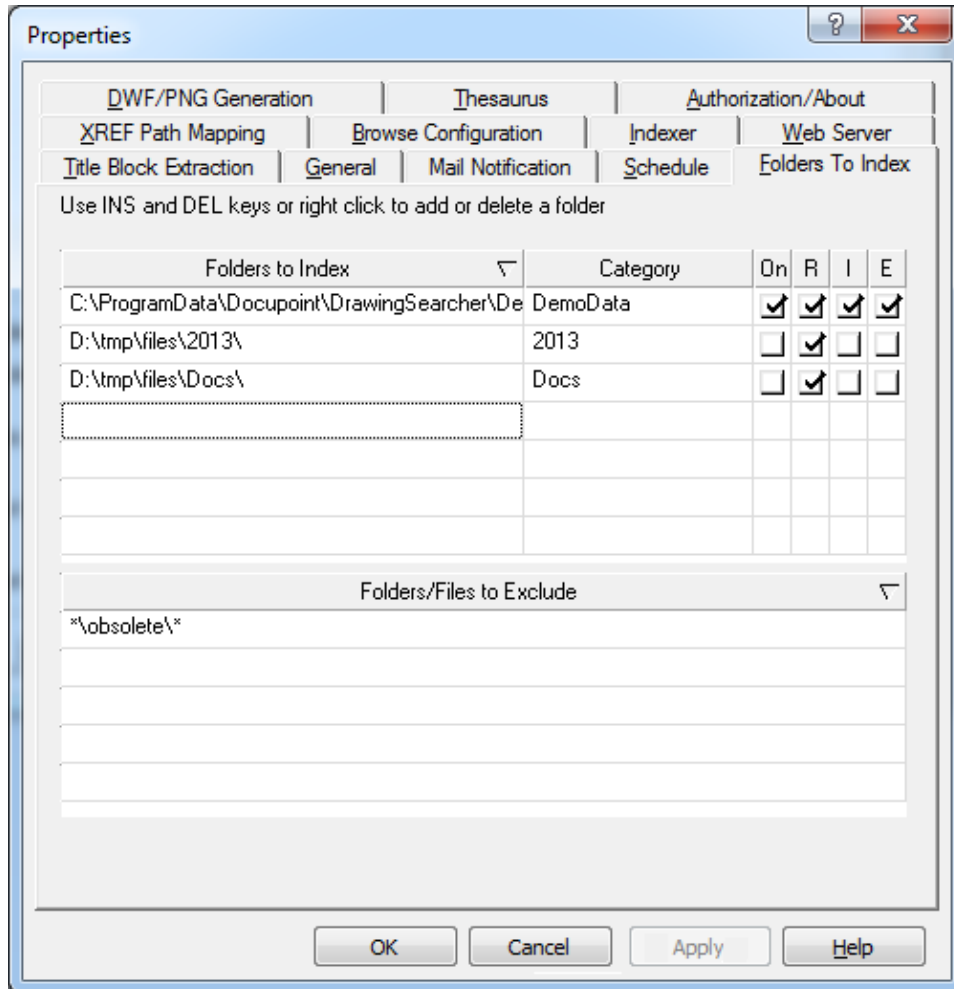
- [Console application](#)
- [Console main dialog](#)

- DrawingSearcher settings

DrawingSearcher 2019

Console Application: Properties

Through the DrawingSearcher Console Application (Preferences) you get access to most of the settings of the DrawingSearcher Web server Scheduler and Indexer components. See the [DrawingSearcher Console Application](#) for more information on how to start the console. The console [main dialog](#) allows the Administrator to start and stop the server, execute the index job, view the web server log and so on. To customize the rest of the DrawingSearcher settings, press the "**Configure**" button on the [main dialog](#). You will see the following dialog:



All the properties are separated into categories. Each property page contains properties related to the separate category. Below is the list of standard property pages (plug-ins can add custom pages):

Property Page Name:	Short description:
<u>Folders to Index</u>	Used to specify the location of all files that are to be indexed for searching by

	DrawingSearcher
<u>Title Block Extraction</u>	Used to enter the title block names and attribute values for extraction and display of title block data in the search results
<u>Thesaurus</u>	Allows the entry of related words for searching
<u>XREF Path Mapping</u>	Used to specify alternate paths for the drawings when XREF's cannot be found in their original location
<u>Browse Configuration</u>	Allows editing settings related to the "Browse tab" of the web server
<u>Indexer</u>	Used to specify the type of documents to be indexed by the DrawingSearcher indexer component, indexer error logging settings, realtime indexing options and indexer logging options. Use this tab also to view the indexer's log files.
<u>Schedule</u>	Used to configure the scheduler component. Allows an organization to specify time intervals for re-indexing (incrementally created, new documents created in the future).
<u>Authorization/About</u>	Contains license authorization information
<u>General</u>	Used to specify the location of files created by the DrawingSearcher (such as index file location, log file location, web server root folder)
<u>Web Server</u>	Used to configure web-server related parameters, such as server port, log file size and allows changing the basic result table parameters
<u>PDF/DWF/PNG Generation</u>	Used to enable the automatic generation of DWF (Drawing Web Format) and PNG (Portable Network Graphics) files (during indexing) and specify the parameters associated with the files

DS entrance page

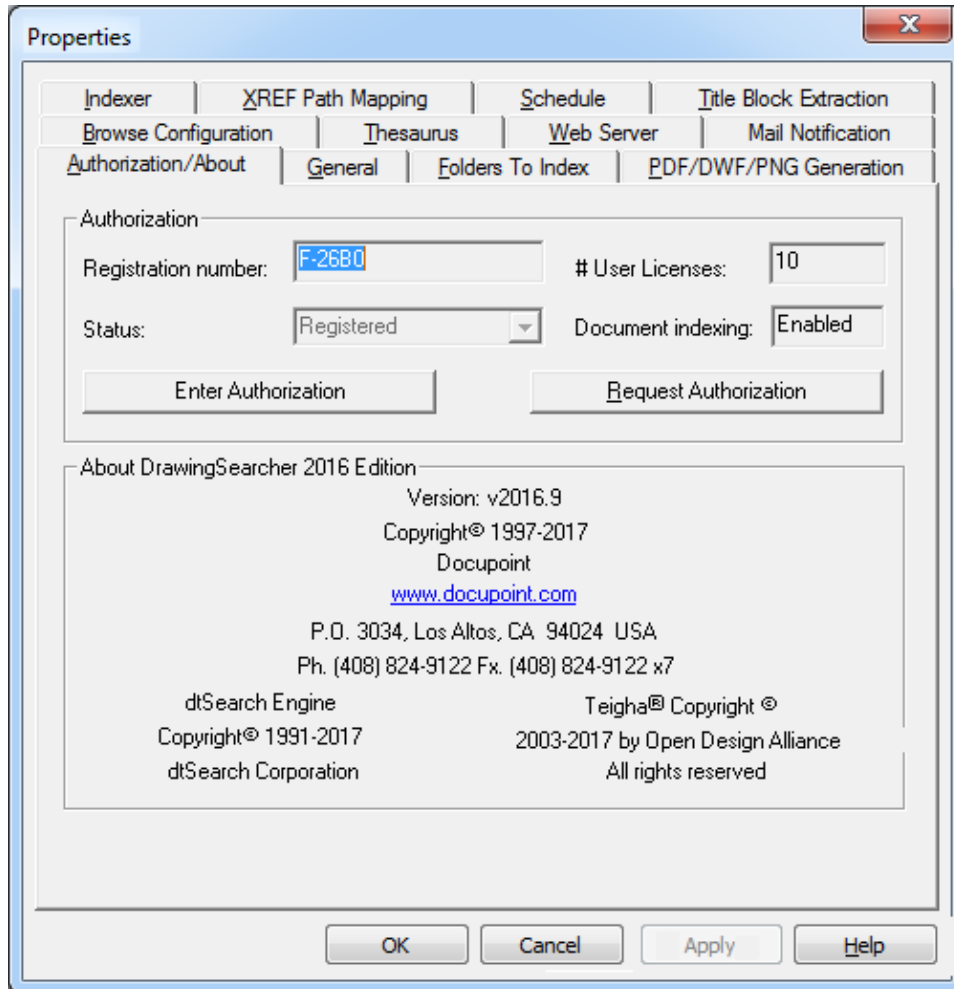
<u>Mail Notification</u>	Used to configure notifications by email
--------------------------	--

DrawingSearcher 2019

Authorization/About Tab

The authorization tab contains license authorization and version ('about') information. If you have purchased a DrawingSearcher license email your registration code, along with your company name and location, to authorization@docupoint.com to receive your authorization code. Without an authorization code DrawingSearcher will run in a fully functional evaluation mode for 30 days before timing out.

When selecting the tab you will see the following screen:



To Enter Authorization Code and register your copy of DrawingSearcher 2019 press the "**Enter Authorization**" button and enter the authorization information.

See also:

- [Folders To Index tab](#)
- [Title Block Extraction tab](#)
- [Thesaurus tab](#)
- [XREF Path Mapping tab](#)
- [Browse Configuration tab](#)
- [Indexer tab](#)

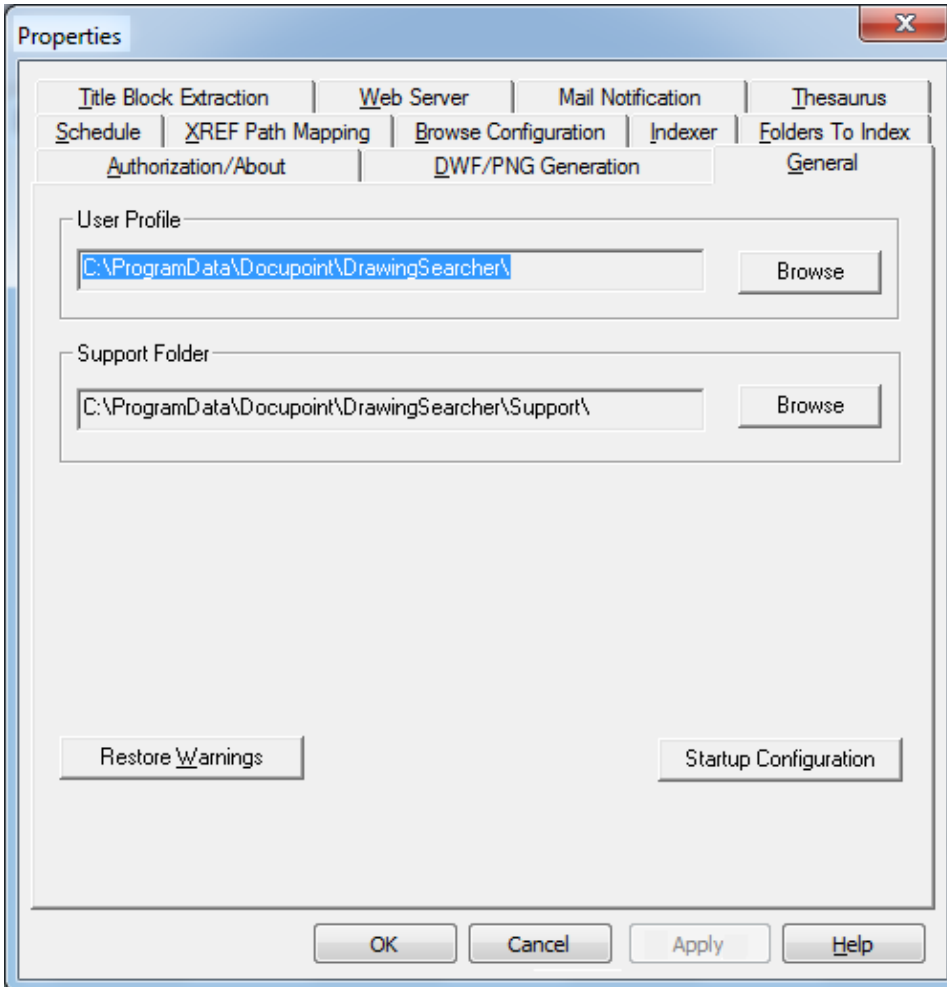
- Schedule tab
- General tab
- Web Server tab
- PDF/DWF/PNG generation tab
- Mail notification tab
- DrawingSearcher Console application

DrawingSearcher 2019

General Tab

The General tab allows the location of files created by DrawingSearcher to be specified. Also you may change user name and password used to start DrawingSearcher as a service.

When selecting the tab you will see the following screen:



To specify the path press the "**Browse**" button on the left to execute the "Browse for Folder" dialog and then choose the new directory. The paths are:

- **User Profile** - This directory defines the folder where DrawingSearcher keeps his data including:
 - Web server root** - Directory of the DrawingSearcher web server. If automatic DWF and/or PNG file creation is selected the files will be written to the directory \images below the web server root directory. This could require a substantial amount of hard disk space - approximately 20% of the total size of the drawing files.
 - Index location** - The index typically is 10% of the drawing file size so the index should be located where there is sufficient space. It is a good practice to

locate the index local to the DrawingSearcher server computer for best performance.

-Log Files - This specifies the location of the log files. Log files are typically relatively small. See also [Indexer Tab](#) for more information on how to enable indexing process logging.

- **Support Folder** - This specifies the location of the AutoCAD SHX font files and other files including plot styles used for DWF, PDF and PNG file creation.
- **Startup Configuration** - If you click it you will see a dialog where you can specify user name and password to start DrawingSearcher as a service or switch it back to basic configuration. The same dialog you may invoke from command line using DrawingSearcher.exe /config because if you specify wrong password it will be not possible to start DrawingSearcher from the Console.

See also:

- [Folders To Index tab](#)
- [Title Block Extraction tab](#)
- [Thesaurus tab](#)
- [XREF Path Mapping tab](#)
- [Browse Configuration tab](#)
- [Indexer tab](#)
- [Schedule tab](#)
- [Authorization/About tab](#)
- [Web Server tab](#)
- [PDF/DWF/PNG generation tab](#)
- [Mail notification tab](#)
- [DrawingSearcher Console application](#)

DrawingSearcher 2019

Web Server Tab

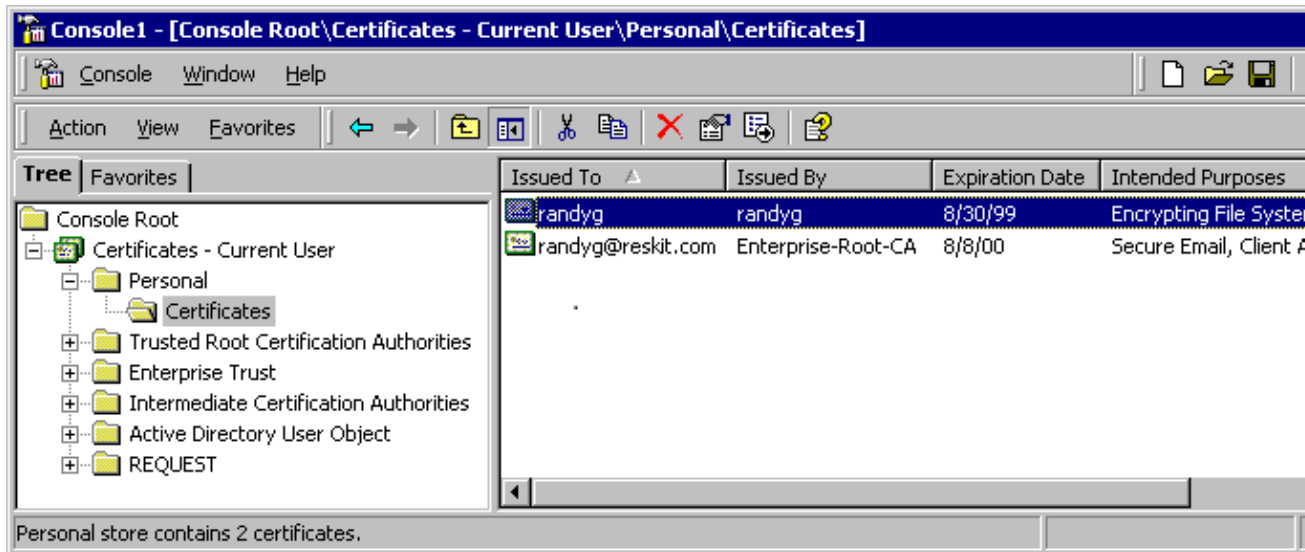
The Web Server Tab used to configure web-server related parameters, such as server port, log file size and allows changing the basic result table parameters

When selecting the tab you will see the following screen:

The screenshot shows the 'Properties' dialog box with the 'Web Server' tab selected. The 'Web Server' section includes a 'Port' field set to 80, a checked 'PDF Preview' checkbox, and an unchecked 'HTTP File Link' checkbox. The 'Protocol' is set to 'Https' and the 'Certificate' is 'User 17 62 39 79'. The 'File Hyperlink Label' section has 'User Defined' selected with the label 'View Drawing:'. The 'Result Table Labels' section has 'Plain Text' selected. The 'Logging' section has 'Search Requests' unchecked and 'Max File Size' set to 500 KB.

Web Server Properties:

- **Port Number** - Set the port number for the web server here
- **PDF Preview** - Enables PDF preview for all types of documents (DWF is used for drawings if disabled)
- **HTTP Link** - Defines if original files will be available using file protocol or they will be sent using HTTP protocol. In case of file protocol user will be able to open the original file and save it to its original place but it will require file access to the folder for every user.
- **Protocol** - Using this combo you can enable https protocol on the web server. Before you chose https protocol you should install certificate file. Please install the certificate to this folder and pick it up.



DrawingSearcher authentication is based on native Windows security. In other words DrawingSearcher don't store any logins or passwords and when user provides login/password they are verified using Windows logon procedure. Also user will be able to search only files that his account can access.

File Hyperlink Label Parameters:

These are used to set the appearance of the hyperlink label displayed in each search result record that display the file path. The radio buttons are:

- **Full Path** - Selecting this radio button causes the full file path to be displayed for the hyperlink. i.e. *file://\machine\share\path\file.dwg* for DWG files and *http://IP Address/web server root/path/file.dwf* for DWF file output.
- **File Name/Ext.** - Selecting this radio button causes the file name and extension to be displayed for the hyperlink.
- **User Defined** - Selecting this radio button causes the user defined text (entered to the right of the button) to be displayed for the hyperlink.
- **Force Upper Case** - Selecting this radio button forces the hyperlink text to be displayed in all upper case.
- **Mixed Case** - Selecting this radio button causes the hyperlink text to be displayed in mixed case.

Results Table Labels :

These parameters control the appearance of the field labels for the results tables. The parameters are:

- **-Plain Text** - Selecting this radio button causes the labels to be displayed as plain text.
- **-Bold Text** - Selecting this radio button causes the labels to be displayed as bold text.
- **-Label/Field Delimiter** - Specify the value to delimit (separate) the field label from the field value.

Logging Parameters:

Logging of the DrawingSearcher web server activity is enabled here. This log is useful for troubleshooting. To enable the web server logging check the " **Search requests**" item. Also, select the " **View**" button to view the web server log file. Use the " **Max File size**" editbox to specify the maximum size of the log file. If the size of the log exceeds specified value the log is truncated from the beginning.

See also:

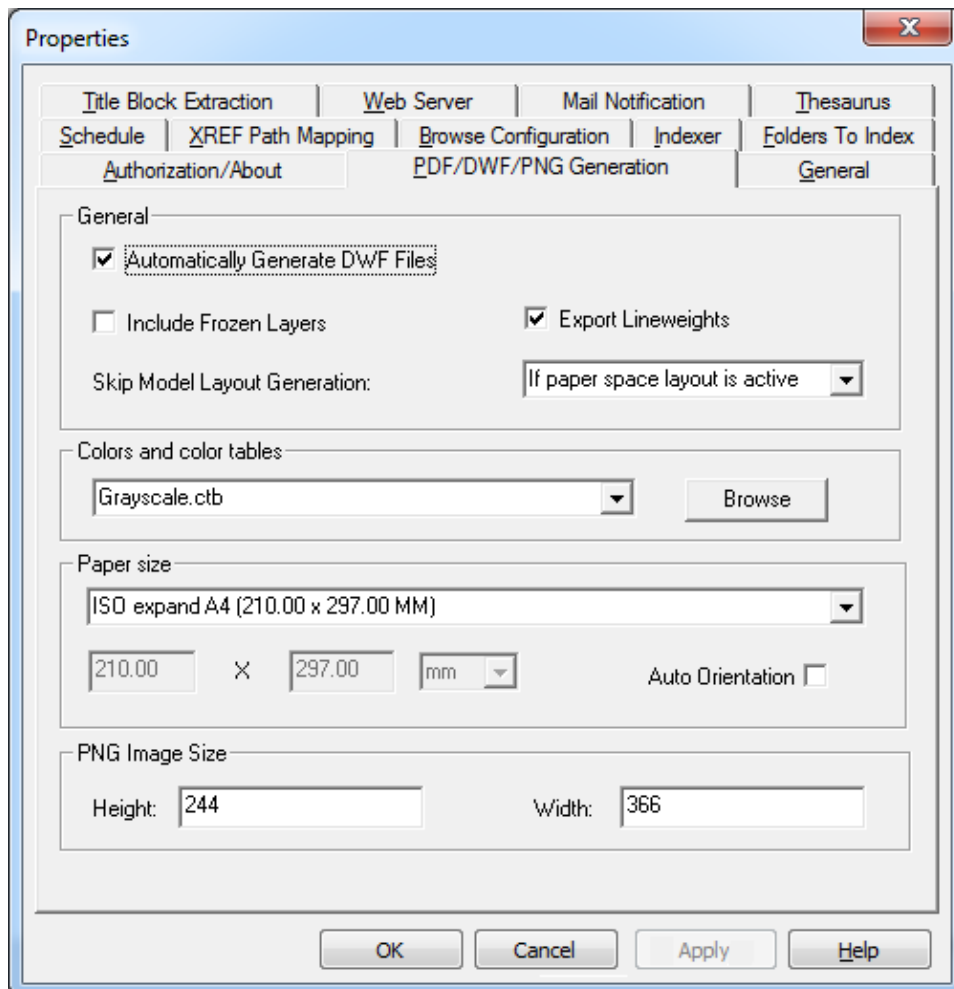
- [Folders To Index tab](#)
- [Title Block Extraction tab](#)
- [Thesaurus tab](#)
- [XREF Path Mapping tab](#)
- [Browse Configuration tab](#)
- [Indexer tab](#)
- [Schedule tab](#)
- [Authorization/About tab](#)
- [General tab](#)
- [PDF/DWF/PNG generation tab](#)
- [Mail notification tab](#)
- [DrawingSearcher Console application](#)

DrawingSearcher 2019

PDF/DWF/PNG Generation Tab

Use this tab to enable the automatic generation of **DWF** (Drawing Web Format), **PDF** and **PNG** (Portable Network Graphics) files (during indexing) and specify the parameters associated with each. **DWF** files can be viewed with the **Autodesk DWF Viewer**. **PNG** files are very small (usually <5K) and are used to quickly display a thumbnail of the drawing that can be reviewed prior to opening the file for detailed viewing. If PNG files are enabled a different set of results templates are displayed for selection in the search interface which include the PNG preview in the search results. PDF files are automatically generated by default and use the same settings as DWF. Multiple viewports in drawings will be displayed as separate pages in PDF file.

When selecting the tab you will see the following screen:



DWF/PDF/PNG generation options:

- **Automatically Generate DWF file** - check if you want a DWF file to be generated for each drawing indexed by DrawingSearcher

- **Include Frozen Layers** - check this option if you want the invisible (frozen) layers information to be processed by the indexer.
- **Export Lineweights** - enables export of lineweights to DWF/PDF files. It is important to setup paper size because lineweights are measured in millimeters.
- **Skip Model Layout Generation**- Select the option you would like to use to skip model layout generation. This is helpful when using paper space drawing sets and the model view is not intended to be published.
- **Colors and color tables** - Allows you to set different background and foreground color options - for instance, black on white. Here you can specify if plot styles should be used. There are two possible options. If you select 'Use plot style" DrawingSearcher will use plot styles stored in the drawings. If you press Browse and choose plot style file it will be applied to all drawings. This plot style will be copied into DrawingSearcher support folder. Also, plot styles stored in the files are located in the support folder.
- **Paper size** - Configure paper size used in PDF and DWF generation. It is essentially important when lineweight generation is enabled.
- **Auto orientation** - Enables automatic portrait/landscape orientation depending on layout extents.
- **PNG Image Size** - Specify the PNG image size (in pixels). The default results template that ship with DrawingSearcher are designed for a PNG size of 366 (W) x 244 (H) when using attributed title block extraction and 540 (W) x 360 (H) when title block extraction is off.

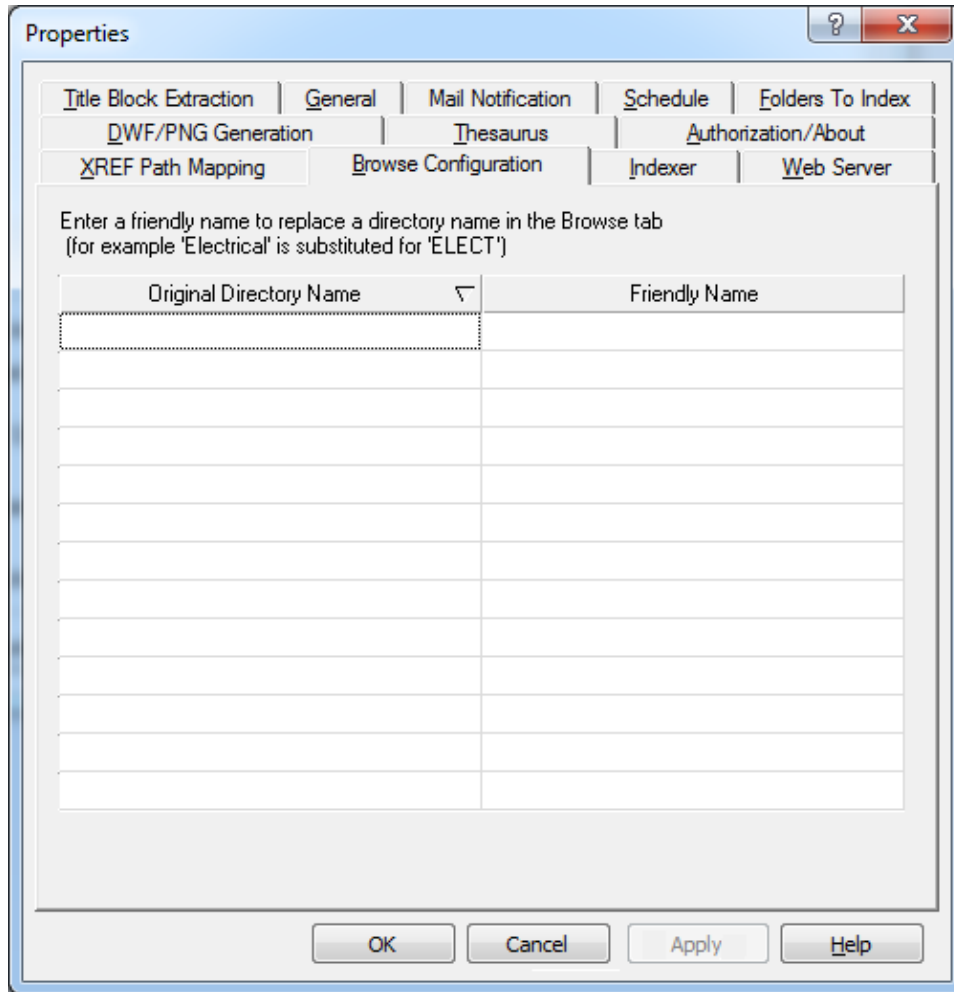
See also:

- [Folders To Index tab](#)
- [Title Block Extraction tab](#)
- [Thesaurus tab](#)
- [XREF Path Mapping tab](#)
- [Browse Configuration tab](#)
- [Indexer tab](#)
- [Schedule tab](#)
- [Authorization/About tab](#)
- [General tab](#)
- [Web Server tab](#)
- [Mail notification tab](#)
- [Docupoint Console application](#)

DrawingSearcher 2019

Browse Configuration Tab

The Browse Tab allows editing settings related to the "Browse tab" of the web server:



It in the grid you can enter the "**Friendly Names**" (substitutions) for the specified folder names. For example if you have the folder on your drive called "D1999" you can replace this directory name in the browse tab with the friendly name such as "Drawings 1998". The friendly name substitutions are entered once and used as many times as the directory name occurs.

See also:

- [Folders To Index tab](#)
- [Title Block Extraction tab](#)
- [Thesaurus tab](#)
- [XREF Path Mapping tab](#)
- [Indexer tab](#)
- [Schedule tab](#)
- [Authorization/About tab](#)

DS entrance page

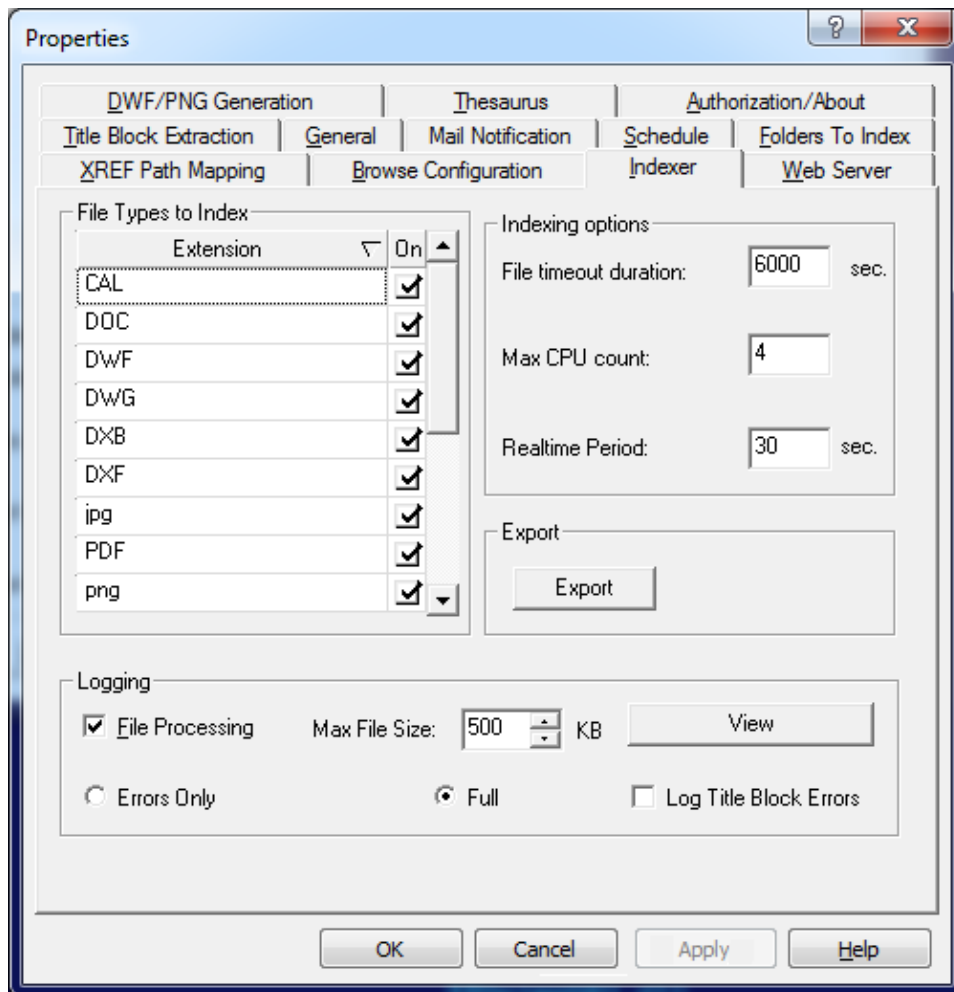
- General tab
- Web Server tab
- PDF/DWF/PNG generation tab
- Mail notification tab
- DrawingSearcher Console application

DrawingSearcher 2019

Indexer Tab

The **Indexer Tab** is used to specify the type of documents the be indexed by the DrawingSearcher indexer component, indexer error logging settings, realtime indexing options and indexer logging options. Use this tab also to view the indexer log files.

When selecting the tab you will see the following screen:



File Types To Index Grid:

Use the grid to enter or remove the extension of the files to be indexed. By default indexing is enabled for **DWG,DXF** and **DXB** drawings. Also you can manually enable or disable indexing for the specified file type by checking the cell in the "**On**" column of the grid. To add the new filetype to the list go to the end of the list and press "Enter"(or double click) to enter the new file extension.

Error Handling Options:

- **File timeout duration** - the default timeout period for the files processed by the indexer. If the processing does not finish for the specified file in given timeout period, the file is skipped by the indexer and an error message is logged
- **Max CPU Count** - number of processor units participating in indexing.
- **Realtime Period** - the default realtime period. Each time the directory structure has changed for the specified folder, the indexer is notified once per realtime period, and the realtime index job is executed automatically.

Logging:

- **File Processing** - check this item if you want the file processing logging to be enabled. The size of the indexer log file by default is limited to 500 Kbytes. To change the maximum indexer log file size use the "**Max File Size**" edit box. To view the indexer log press the "**View**" button.
- **Log Title Block Errors** - check the item to enable logging of files that do not match the title block extraction rules.
NOTE : Enabling this option may greatly increase the number of errors in the bad file log.

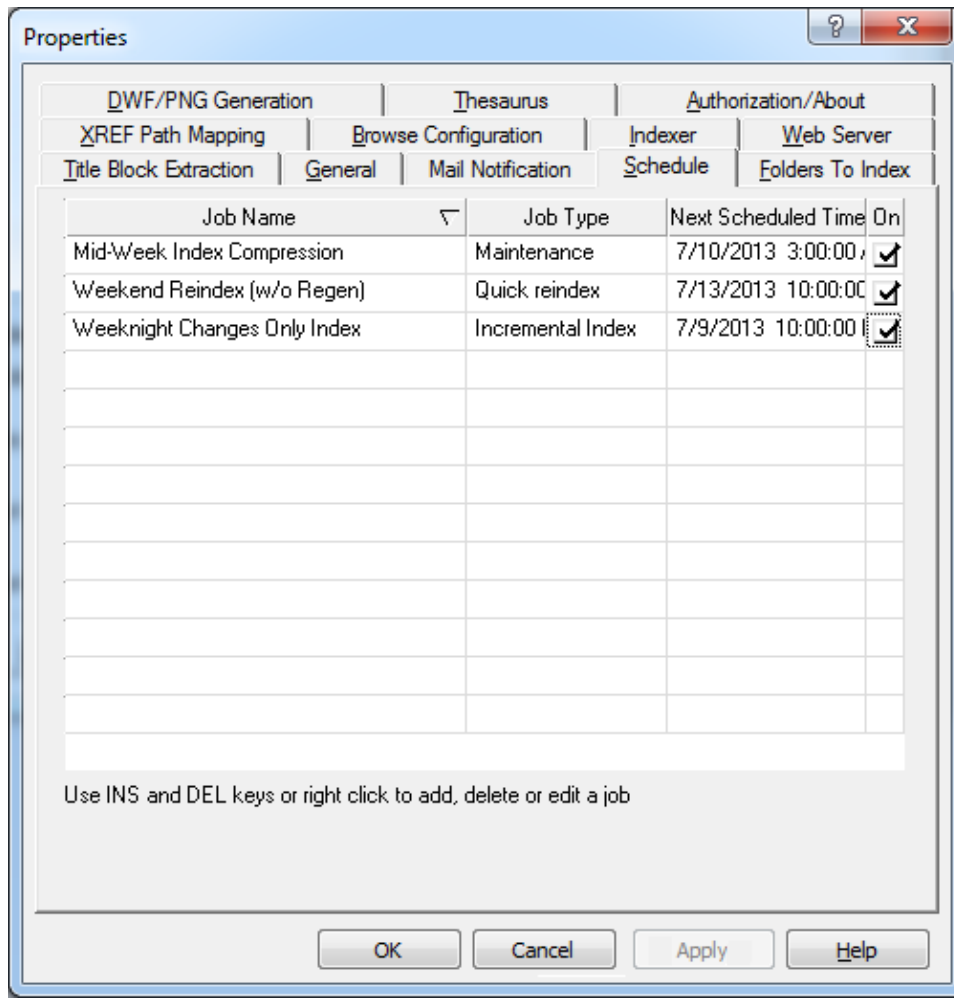
See also:

- [Folders To Index tab](#)
- [Title Block Extraction tab](#)
- [Thesaurus tab](#)
- [XREF Path Mapping tab](#)
- [Browse Configuration tab](#)
- [Schedule tab](#)
- [Authorization/About tab](#)
- [General tab](#)
- [Web Server tab](#)
- [PDF/DWF/PNG generation tab](#)
- [Mail notification tab](#)
- [Docupoint DrawingSearcher Console application](#)

DrawingSearcher 2019

Schedule Tab

When selecting the tab you will see the following screen:



The schedule tab allows you to specify intervals for re-indexing drawings so the latest information is in the search engine database. It is recommended to complete an **incremental index** at least once per day. The **maintenance job** is recommended to be run once per week during idle periods on the system. Maintenance compresses the index, reducing it's size and also restores any DWF or PNG files that have been accidentally deleted from the system. After an initial index is created there is no real reason to use the full Re-index option unless your title block configuration and/or categories have changed requiring the new values to be stored in the index.

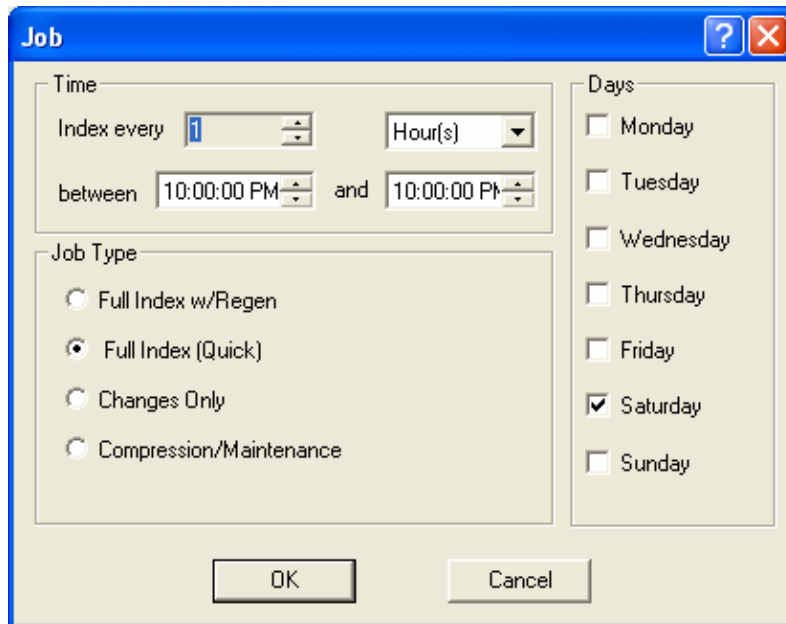
The schedule tab contain only one grid, that has four columns. The parameters that can be set on this grid are:

- **Job Name** - Type in a job name that describes the index job.
- **Job Type** - Right click on the Job Type column to edit the scheduled job. The job types are 'Full Index', 'Changes Only' (adds, changes and deletes) and 'Maintenance'.

- **Next Scheduled Job** - This displays the date/time this particular job will be run next.
- **On** - Selecting 'On' makes a particular job active. Deselecting (off) removes the job from the current schedule while retaining the parameters for future use.

To add the new schedule task right click the schedule list grid to enter the context menu: Choose **Add** to add the new job, **Remove** to remove the job from the list, **Edit** to edit the selected job and **Start** to start the job immediately. If you choose Start the settings dialog is closed and the indexing process is executed. See the [DrawingSearcher Console main dialog](#) for more information on starting/stopping index job viewing index process status.

If you choose **Add** or **Edit** from the context menu, the following dialog should appear:



Job Time:

The **Index Every** edit control sets the index interval. The indexer processes the drawings every N hours/minutes. The meaning of the **Index Every** edit control is set by the combo box in the right. If the interval precision is assigned the **Hour(s)** value the indexer is started every N hours, if the combo box is assigned the **Minutes** value, the indexer is started every N minutes from the starting time. The indexing startup time can be changed by editing the **between/edit** control set. If the indexer work time is set to between N and N (the both values are the same), the drawings are processed only once. Otherwise the indexing process is executed several times.

Job Days:

By default the indexing is executed every day in accordance to the schedule time. You can change it by checking the Day of Week options : Monday - Sunday . If nothing selected, no indexing process is started during the week.

Job Type:

Choose the job mode by selecting one of the following options : **Full Index w/Regen**, **Full Index (Quick)**, **Changes only** or **Compression/Maintenance** . If you choose to reprocess all files, then all the files found in the target directories and subdirectories will be processed by the indexer component. Also, all image files will be regenerated. **Quick Reindex** recreates the index but recreates only obsolete images. If process **Changes Only**, each document is verified and if it was not changed since the time it was processed by the DrawingSearcher, no changes are added to the dtsearch index and no preview is generated for this file. Otherwise the general processing is performed for this file. The **Maintenance** means that the dtsearch index is compressed on the first step and the missing preview images are regenerated.

Press **OK** to apply changes for the selected job and **Cancel** to leave the job settings intact.

See also:

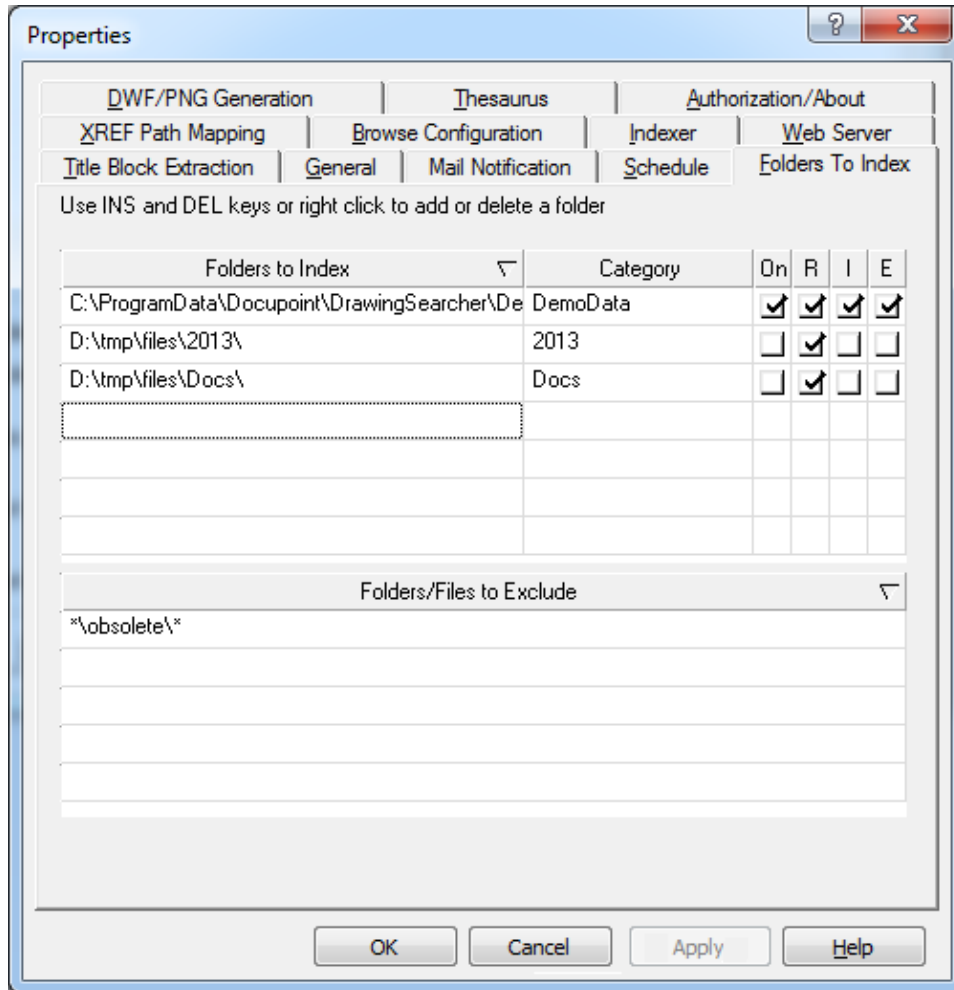
- [Folders To Index tab](#)
- [Title Block Extraction tab](#)
- [Thesaurus tab](#)
- [XREF Path Mapping tab](#)
- [Browse Configuration tab](#)
- [Indexer tab](#)
- [Authorization/About tab](#)
- [General tab](#)
- [Web Server tab](#)
- [PDF/DWF/PNG generation tab](#)
- [Mail notification tab](#)
- [Docupoint DrawingSearcher Console application](#)

DrawingSearcher 2019

Folders to Index Tab

The "**Folders to Index**" tab is used to specify the location of files that are to be indexed for searching by DrawingSearcher.

When selecting the tab you will see the following dialog:



Here is the description of the controls on the "**Folders To Index**" property page:

Folders to Index grid:

The grid is used to add/remove folders that are to be scanned for the files to be indexed. It contains six columns:

- **Folders to Index column** - right click the mouse to enter the context menu. After that choose "**Add**" to add the new folder or "**Remove**" to remove the selected folder from the list.
- **Category column** - enter a Category name which will be used as the first level folder in the browse functionality. The Category name will default to the folder name if no value is entered.

- **R (Recurse)** column - Select the checkbox if you wish to index all directories/files under the one you have selected
- **On** - This button allows you to turn on and off indexing of directories that you have configured. Often when starting out it is helpful to configure all directories to be indexed but scan only a few at a time (by turning the others off) until a full index is created. After a full index has been created this switch should typically be set to 'On' for all directories to maintain index current. Static (archive) directories can be left in the 'Off' configuration.
- **I (i-drop)** - check the button if you want to enable the i-drop feature for the selected folder
- **E (Edit)** - this button enables a pencil icon with each search result to allow the file to be opened and edited with the default associated program

Folders/Files to exclude grid:

The grid allows to enter/modify the names of folders/files that are not scanned during the indexing process. Note also that the wildcards are allowed when entering the exclude filter.

See also:

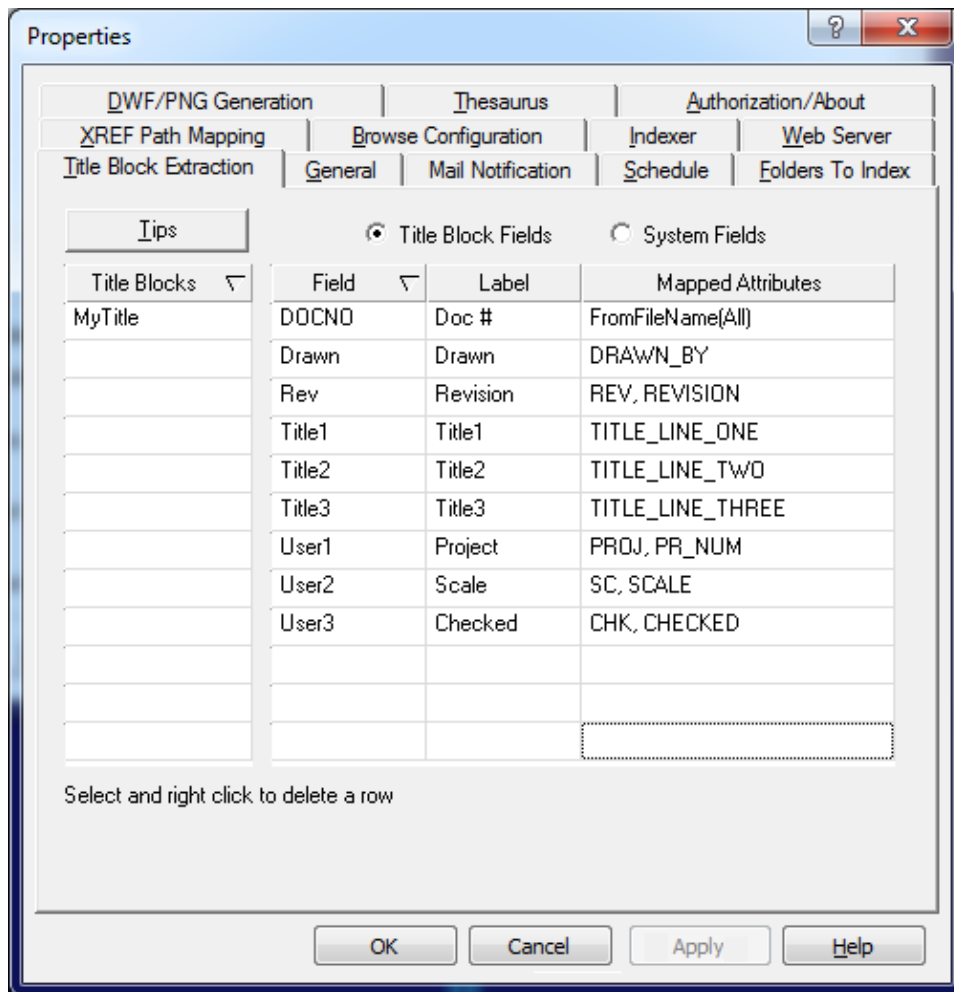
- [Title Block Extraction tab](#)
- [Thesaurus tab](#)
- [XREF Path Mapping tab](#)
- [Browse Configuration tab](#)
- [Indexer tab](#)
- [Schedule tab](#)
- [Authorization/About tab](#)
- [General tab](#)
- [Web Server tab](#)
- [PDF/DWF/PNG generation tab](#)
- [Mail notification tab](#)
- [Docupoint DrawingSearcher Console application](#)

DrawingSearcher 2019

Title Block Extraction Tab

The Title Block Extraction tab is used to enter the title block names and attribute values for extraction and display of title block data in the search results. If no title blocks are entered this functionality is disabled. The extracted attribute data is displayed in the search results by merging the field label and extracted attribute value with the %%<field name>%% tags in the results templates (stored as HTML in the 'Standard Templates' and 'Preview Templates' directories).

When selecting the tab you will see the following screen:



Title Blocks Grid - Enter one or more names of title blocks (standard attributed AutoCAD blocks) in which the indexer should look for attributed title block data. If the title block data is stored in two (or more) AutoCAD blocks within a SINGLE drawing enter them both. Title block names should be entered WITHOUT the .DWG extension.

Title Block Fields Grid - Selecting this radio button displays a grid showing the title block attribute extraction fields. The grid columns are as follows:

- **Field** - DrawingSearcher ships with a predefined set of 9 fields that are commonly used in drawing title blocks. These fields match the search results templates that ship with DrawingSearcher. You can add or delete field names - however you should also make the corresponding changes to the %%<field name>%% tags in the HTML tables for search results display. All fields except DwgNo are editable. Generally, field names should be kept short and should not contain spaces.
- **Label** - The label specified for the field will display in the search results with field value and also in the drop down list in the Title Block search page. In general, the labels should be longer "friendly" names and can include special characters (Dwg. # for instance). **HINT** If you do NOT want a label to display in a particular results template (a list for instance) put a '-' before the field name. For instance, %%-TITLE1%% will display the value of the title1 field but NOT the label and delimiter.
- **Mapped Attributes** - This is used to list the attributes in the title blocks from which the title block data is to be extracted for the field. **Many attributes can be mapped to a single field by separating them with commas.** For instance, TITLE1, 1STLINE, L1 and FIRST_TITLE_LINE might all be mapped to the field TITLE1.

IMPORTANT NOTE: SPECIAL HANDLING OF DRAWINGS WITH NON-UNIQUE ATTRIBUTES

It is not unusual for AutoCAD title blocks to contain non-unique attribute names. For instance, three title lines all with the attribute name 'TITLE'. DrawingSearcher has the unique capability of handling this by appending 1, 2, 3, etc, to the attribute name in descending order of the 'Y' coordinate of the drawing. Simply map the attribute 'TITLE1' as the first line, 'TITLE2' for the second line and 'TITLE3' for the third line. This function works for any non-unique attribute that is to be extracted from the title block.

System Fields Radio Button- Selecting this radio button displays the system fields. System fields are pre-defined fields that automatically extract properties of the indexed file. You may not add or remove system fields. However, the label text associated with a system field may be changed.

Title Block Extraction Tips:

1. Enable title block extraction **ONLY** if your drawings generally have well attributed title blocks. Title block extraction allows you to see the title block contents in the search results as well as enabling fielded title block searches. Title block extraction is enabled by entering one or more title block names into the title block list and mapping the attribute names to the appropriate field. Drawings for which a title block match was not found will be logged in the error log for resolution.
2. You do not need to have a single title block standard or even a consistent attribute naming convention

to use title block extraction. If you have multiple attributed title block names that are used enter them all in the list. If you have multiple attribute names that map to a single field map them all to the field by separating them with commas. For instance, for the field '**Title1**' you may have the attributes **LINE1, DESC1, FIRSTLINE, L1**, etc. that need to map to the field. Simply enter these in the mapped attributes field separated by commas.

3. If you have the situation where, for instance, all three of your title description lines have the same attribute name '**TITLE**' map them as **TITLE1, TITLE2, and TITLE3** against the title block fields. They will be extracted with the attribute with the highest 'Y' position assuming the name **TITLE1** and the lower 'Y' position attributes assuming the name **TITLE2, TITLE3**, etc.
4. If you do NOT have well attributed drawings the title block extraction should be disabled by leaving the title block field blank. You may still display the '**System**' fields in the search results. It is strongly suggested that the PNG preview image option is enabled if you do not enable title block extraction. This will allow the user to preview the drawings in the search results before opening the file for full screen viewing
5. You can customize the field labels to be displayed in the search results by simply entering the desired value in the Label column.
6. If you added or remove fields you should also modify the results templates accordingly. The field name list needs to be in the results templates as a **%%<field_name>%%** key in the results template to be able to merge the label and extracted value into the results template. The default (out of the box) configuration has fields configured to match those in the template files. You will need to know basic HTML table editing to be able to modify the template files.

See also:

- [Folders To Index tab](#)
- [Thesaurus tab](#)
- [XREF Path Mapping tab](#)
- [Browse Configuration tab](#)
- [Indexer tab](#)
- [Schedule tab](#)
- [Authorization/About tab](#)
- [General tab](#)
- [Web Server tab](#)
- [PDF/DWF/PNG generation tab](#)
- [Mail notification tab](#)

DS entrance page

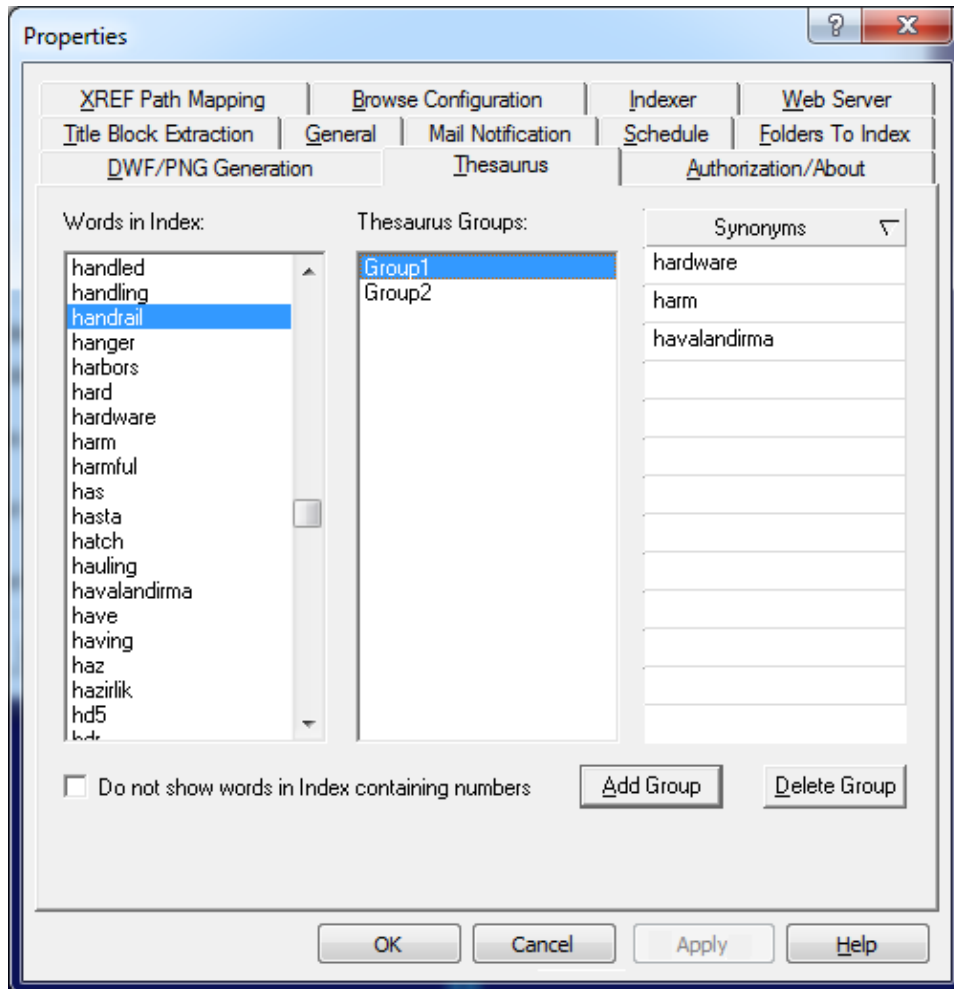
- Docupoint DrawingSearcher Console application

DrawingSearcher 2019

Thesaurus Tab

The thesaurus tab allows the entry of related words for searching.

When selecting the tab you will see the following screen:



For instance the word 'auxiliary' might be abbreviated on certain drawings as 'aux'. Without an entry on the Thesaurus a search on 'auxiliary' cannot find drawings containing 'aux'. The Thesaurus tab allows you to look into the DrawingSearcher word database so you can see abbreviations that have been extracted from drawing.

Simply scroll through the **Words in Index** list looking for abbreviations and other related works that are not in the Thesaurus panel. To add a word to the Thesaurus double click the word in the **Words in Index** pane and they will be copied to the synonyms pane. Enter (by typing) additional related word in the synonyms pane and hit 'Add Group' to add them to the Thesaurus database. Note you can also enter phrases in the thesaurus. For instance, to associate 'TBD' with 'To be determined' for searching.

See also:

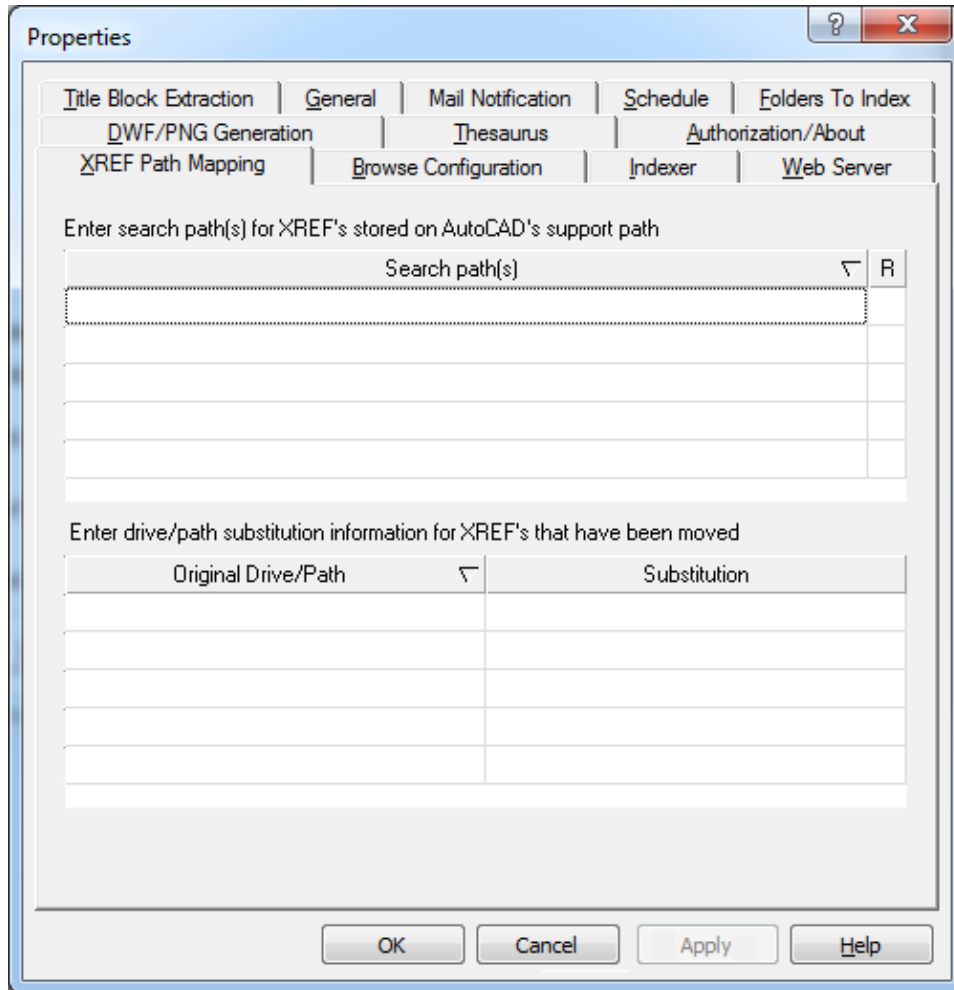
- [Folders To Index tab](#)
- [Title Block Extraction tab](#)
- [XREF Path Mapping tab](#)
- [Browse Configuration tab](#)
- [Indexer tab](#)
- [Schedule tab](#)
- [Authorization/About tab](#)
- [General tab](#)
- [Web Server tab](#)
- [PDF/DWF/PNG generation tab](#)
- [Mail notification tab](#)
- [Docupoint DrawingSearcher Console application](#)

DrawingSearcher 2019

XREF Path Mapping Tab

XREF path mapping is used to specify alternate paths when XREF's cannot be found in their original location.

When selecting the tab you will see the following screen:



There are two grids on this tab used to specify additional XREF information:

- **Search Paths Grid** - Search paths are typically used to specify the location of title blocks and other standard XREF's that are typically located on the AutoCAD support path. The 'R' check box allows the subdirectories to be recursed.
- **Drive/Path Substitution Grid** - Drive/Path substitution is typically used when XREF drawings have been moved from their original location to a new drive and/or directory. In the XREF folder column specify the portion of the path (from the left) you would like trimmed off the XREF file path. In the Substitution column enter the drive and path that you would like to replace the trimmed portion. For instance, if the original path to the XREF's was D:\ENGINEERING\DWGS and now the DWG directory is located in the root drive of a computer named 'Tech1' the trim (original drive/path) would be

'D:\ENGINEERING' and the substitution would be '\\Tech1'

See also:

- [Folders To Index tab](#)
- [Title Block Extraction tab](#)
- [Thesaurus tab](#)
- [Browse Configuration tab](#)
- [Indexer tab](#)
- [Schedule tab](#)
- [Authorization/About tab](#)
- [General tab](#)
- [Web Server tab](#)
- [PDF/DWF/PNG generation tab](#)
- [Mail notification tab](#)
- [Docupoint DrawingSearcher Console application](#)

DrawingSearcher 2019

Mail Notification Tab

The mail notification tab allows configuring parameters to notify administrator about DrawingSearcher status.

When selecting the tab you will see the following screen:

The screenshot shows a 'Properties' dialog box with the 'Mail Notification' tab selected. The dialog contains the following fields and buttons:

- Administrator email:** An empty text input field.
- Outgoing SMTP Server:** A text input field containing 'mail.docupoint.com'.
- Outgoing SMTP Server Port:** A text input field containing '25'.
- Login:** A text input field containing 'RequestAuthorization@docupoint.com'.
- Password:** A text input field containing '*****'.
- Test:** A button located below the password field.
- Bottom buttons:** 'OK', 'Cancel', 'Apply', and 'Help' buttons.

- **Administrator email** - Input email where you wish the notifications to be sent.
- **Outgoing SMTP Server** - Input SMTP mail server you wish emails would be sent through.
- **Outgoing SMTP Port** - Input SMTP mail server port. Usually 25 is used for standard SMTP connection.
- **Login** - Input user name used to login on SMTP server. If you leave this field blank it means SMTP server uses no authentication.
- **Password** - Input valid password(case-sensitive) that corresponds to the login.

You may press Test button in order to test the connection.

See also:

- [Folders To Index tab](#)
- [Title Block Extraction tab](#)
- [Thesaurus tab](#)
- [XREF Path Mapping tab](#)
- [Browse Configuration tab](#)
- [Indexer tab](#)
- [Schedule tab](#)
- [Authorization/About tab](#)
- [General tab](#)
- [Web Server tab](#)
- [PDF/DWF/PNG generation tab](#)
- [Docupoint DrawingSearcher Console application](#)